

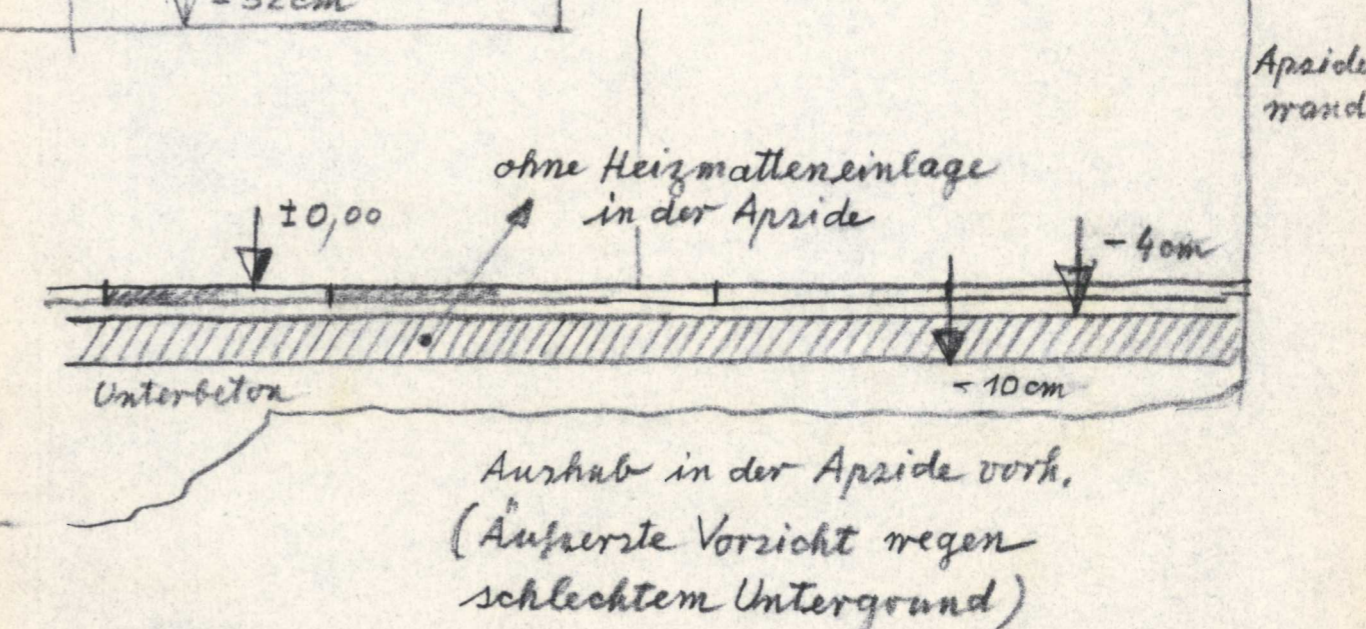
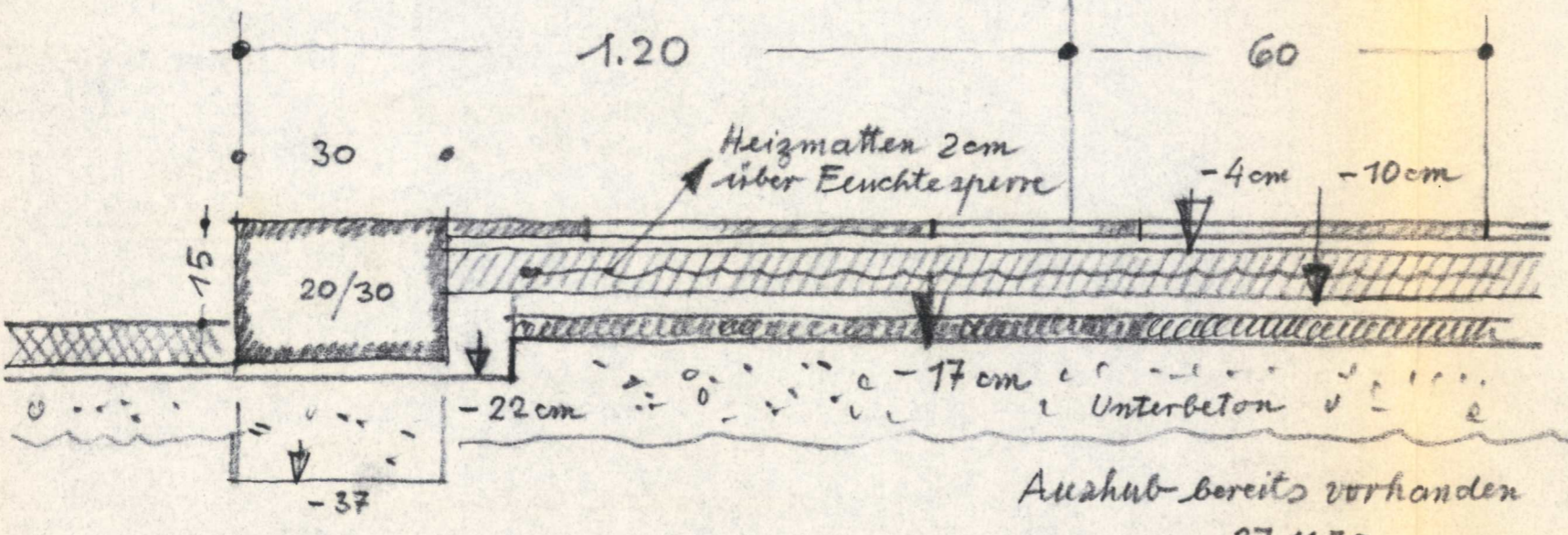
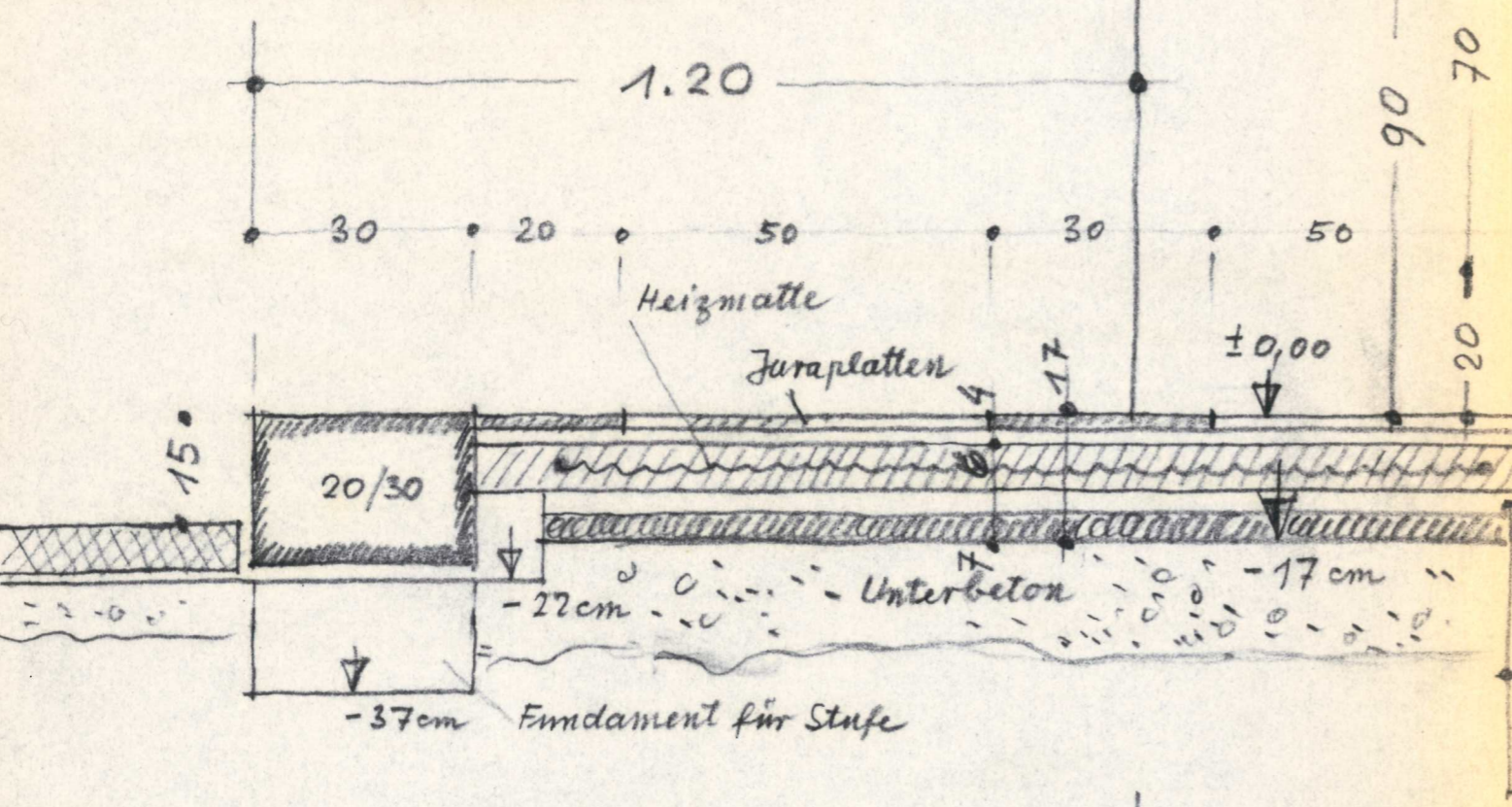
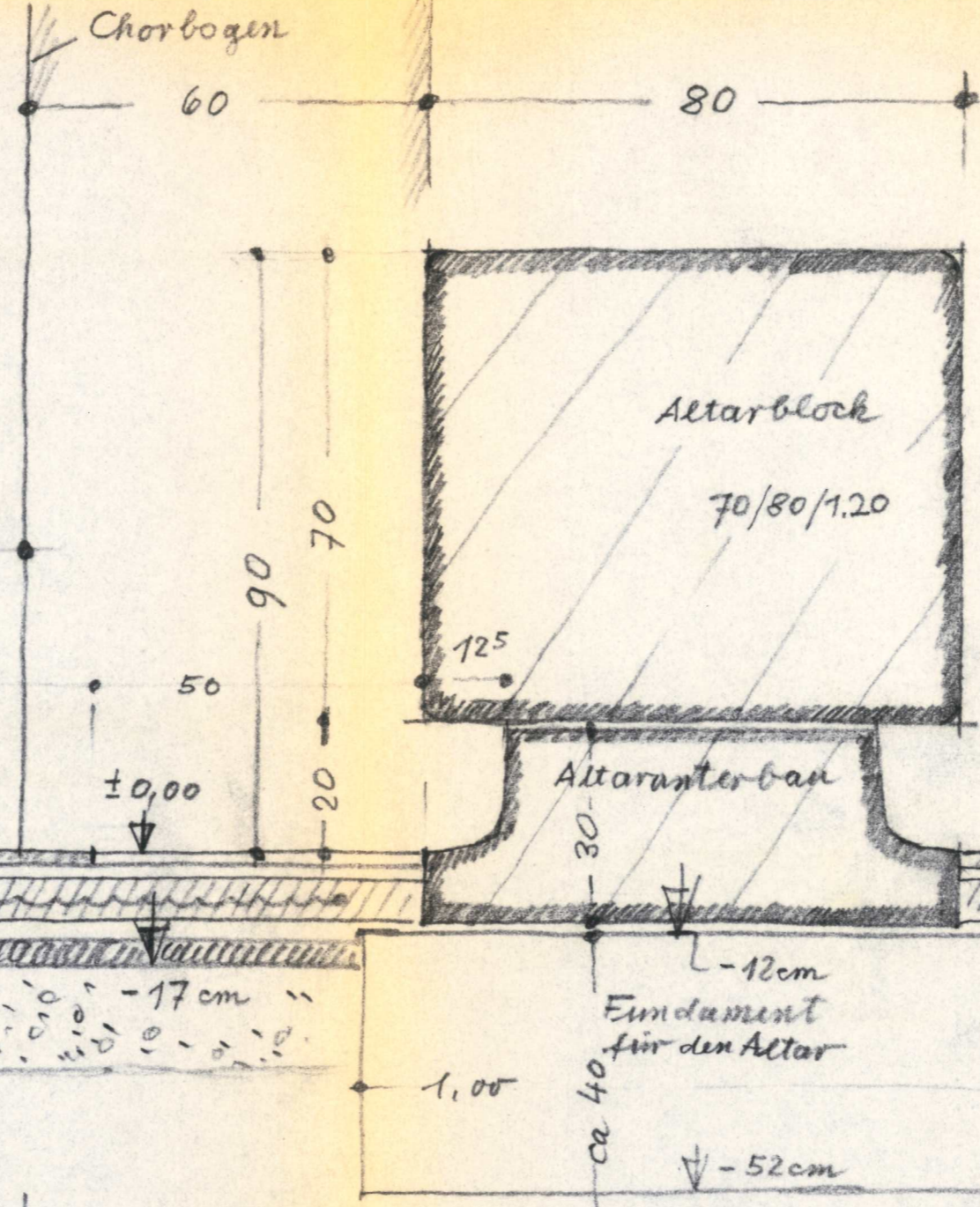
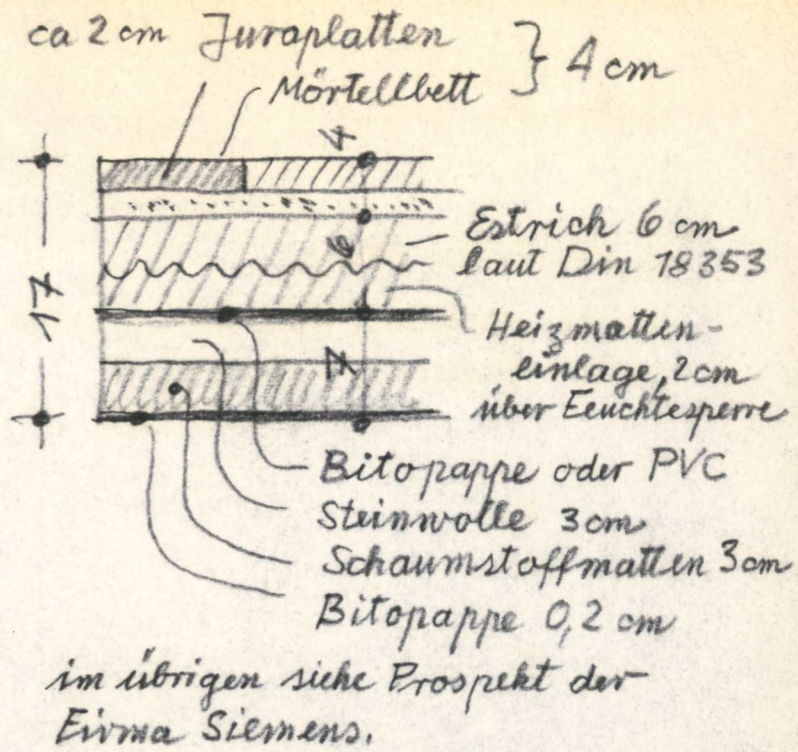
Eilialkirche St. Martin München-Riem

Schnitt 1:10

Geänderter Plan

durch nachträgliche Anordnung  
einer Fußbodenheizung

M. 1:5. Fußbodenschnitt



PLAN N<sup>o</sup> 6 30.10. 1979  
 geändert am 28.11.79 wegen Fußbodenheizung  
 Jui

Eilialkirche  
München-Riem

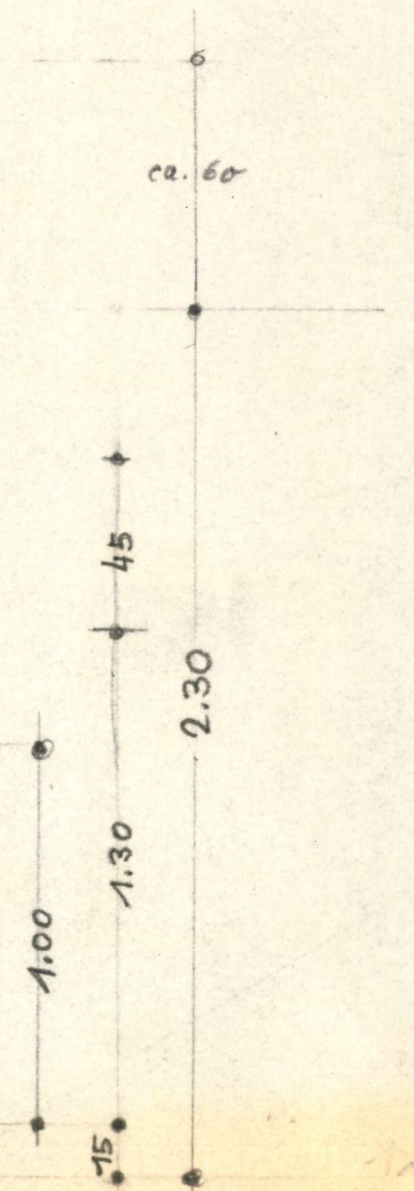
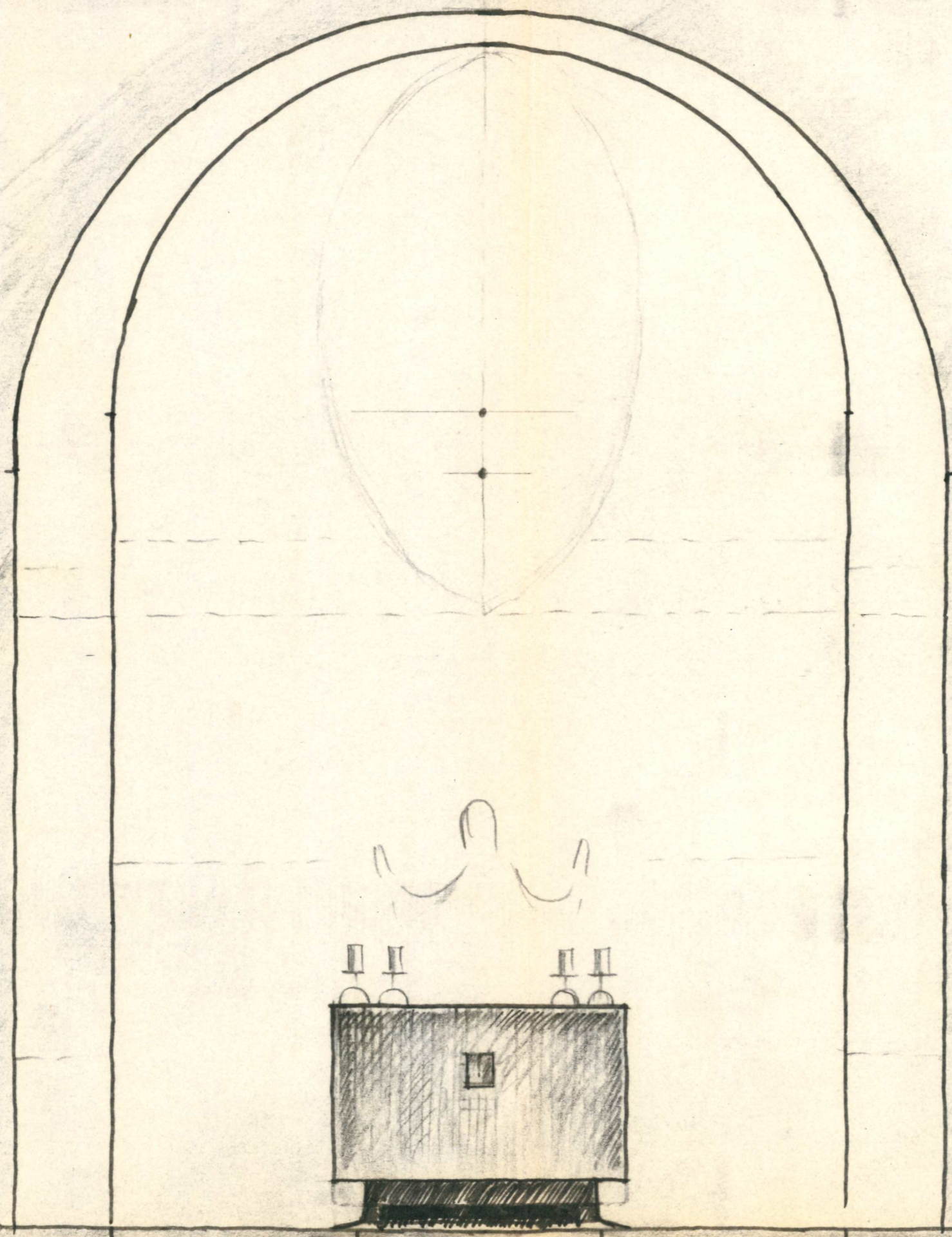
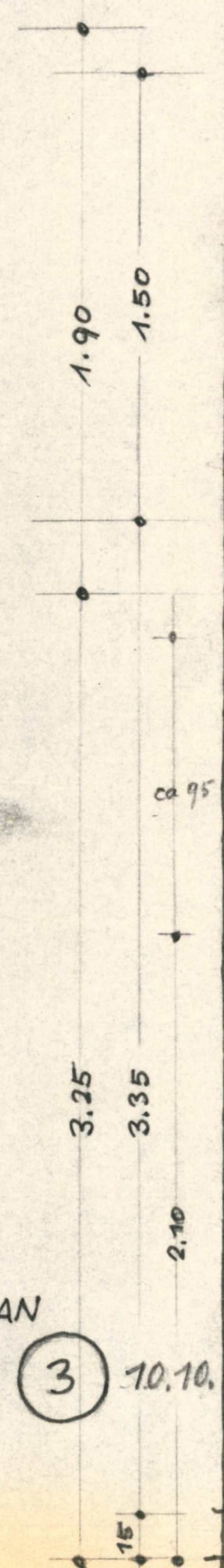
Blick zum  
Presbyterium

M. 1:20

Architekt: *J. Müller*

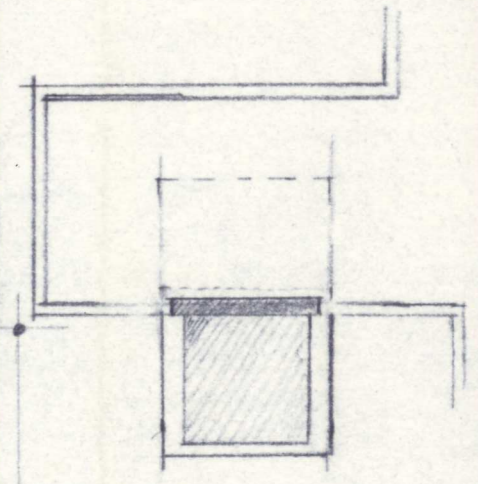
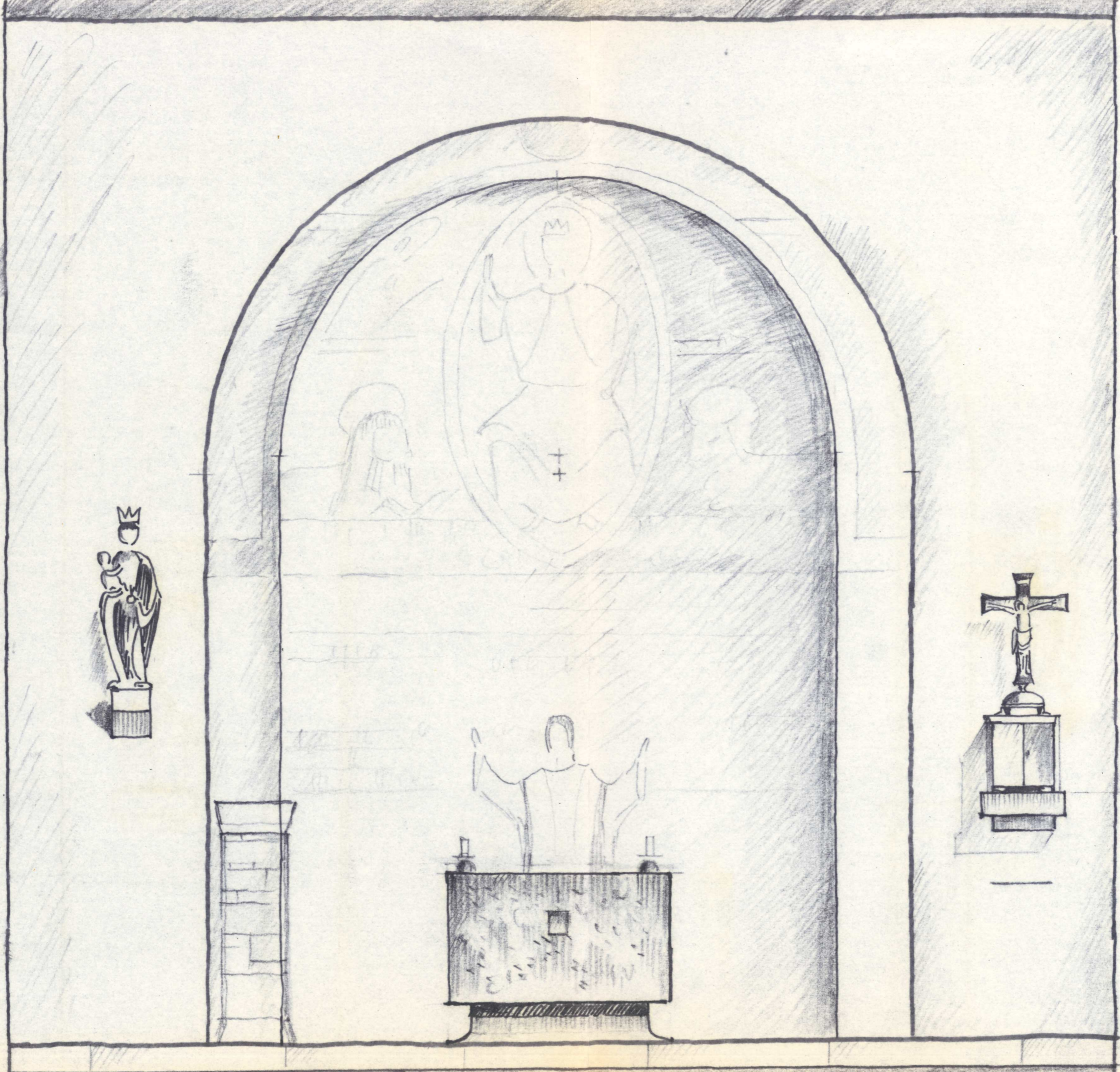
15  
10.10.79

RUDOLF KAISER  
ARCHITEKT, DIPL. ING.  
Savoyenstr. 7  
8000 München 19  
Tel. (089) 171617



PLAN  
N: 3 10.10.79

Filialkirche  
München-Riem

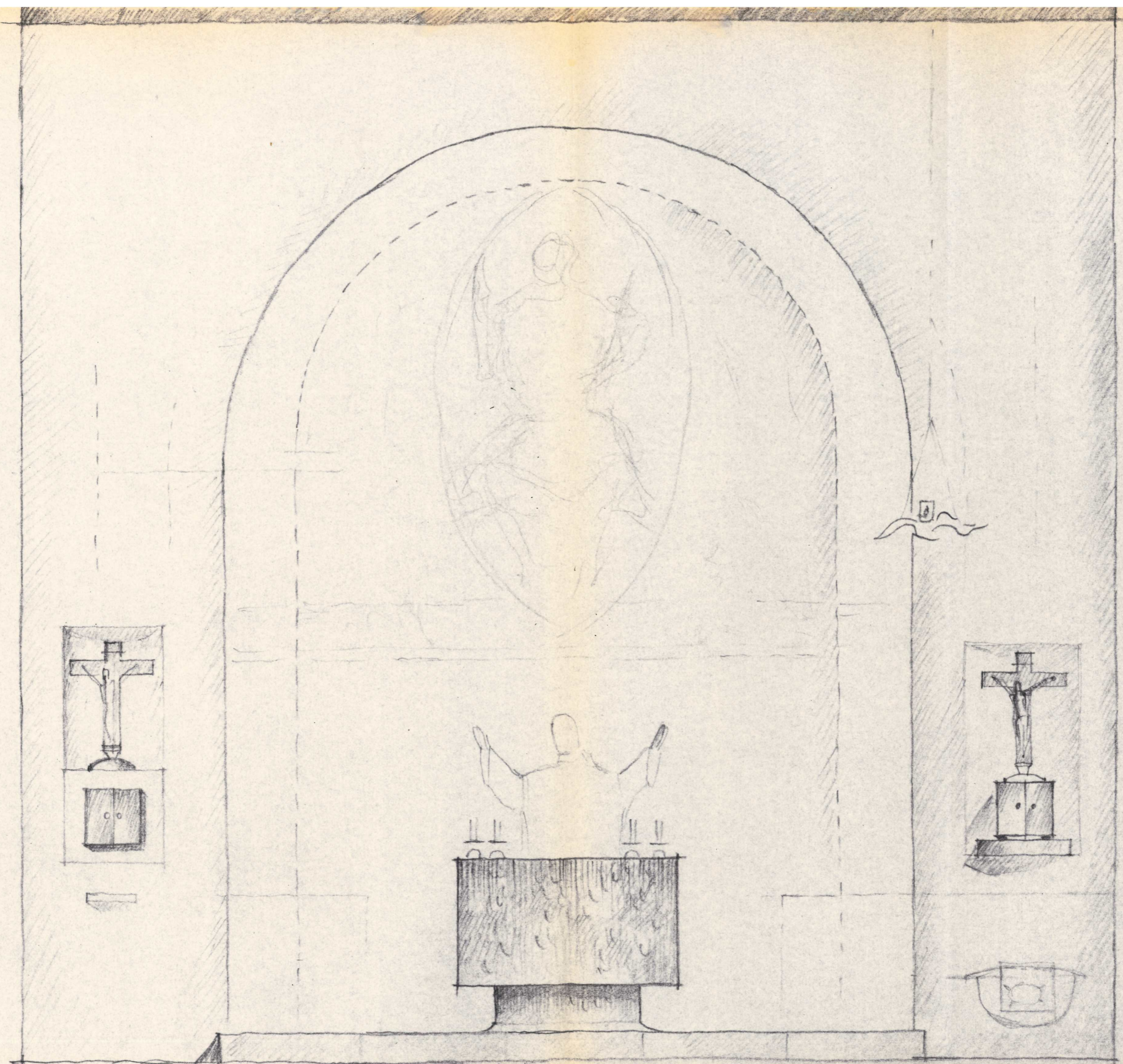


1.30  
0.15

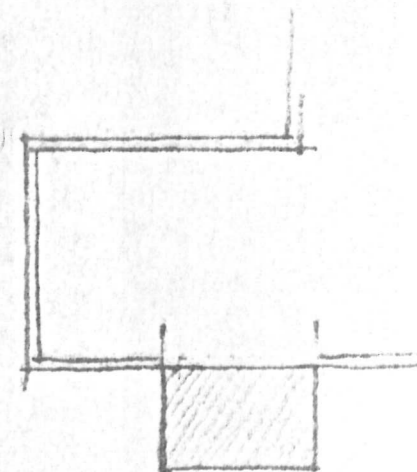
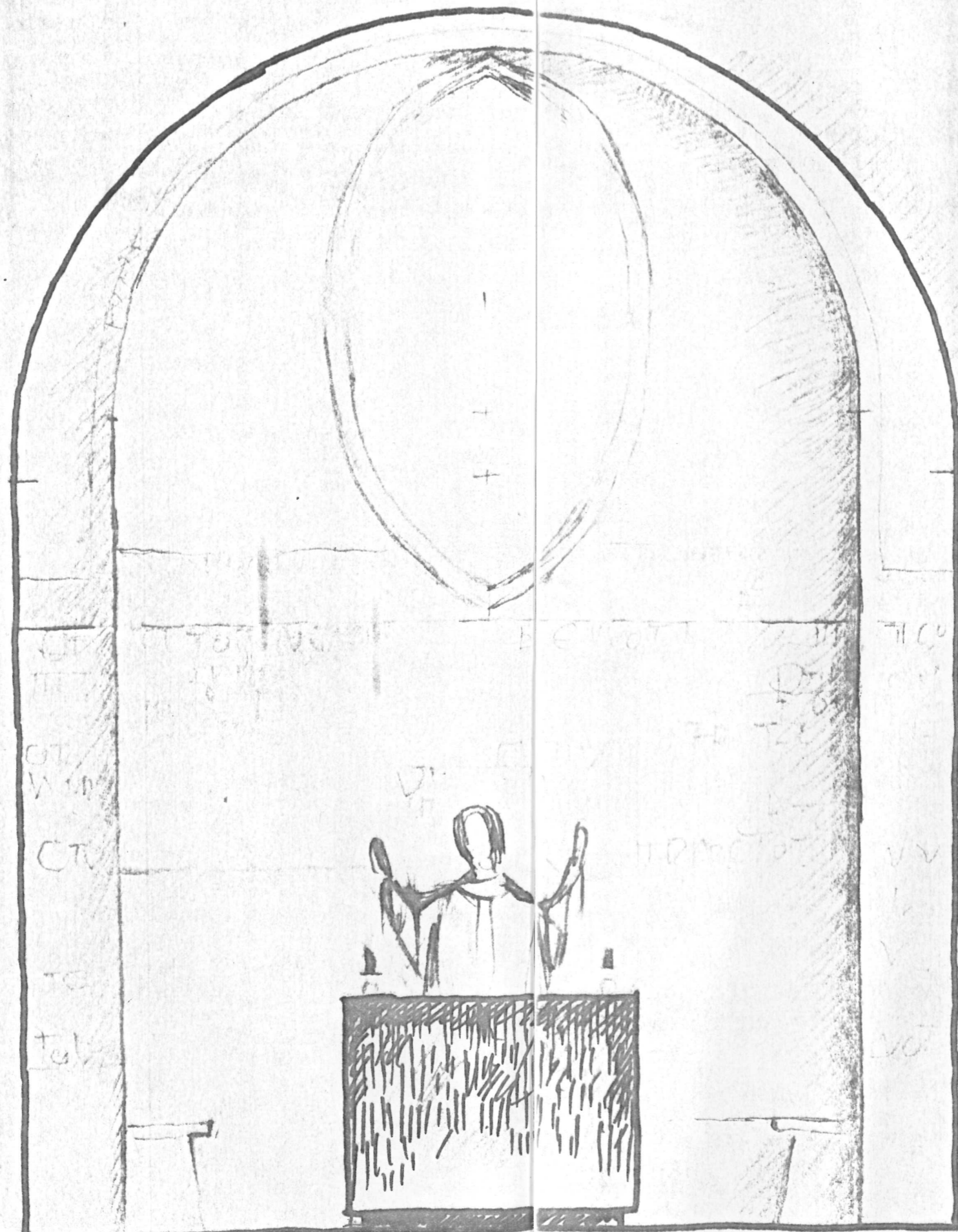
Maßstab. 1:20

Dezember 1979

Janina



Filialkirche  
Riem

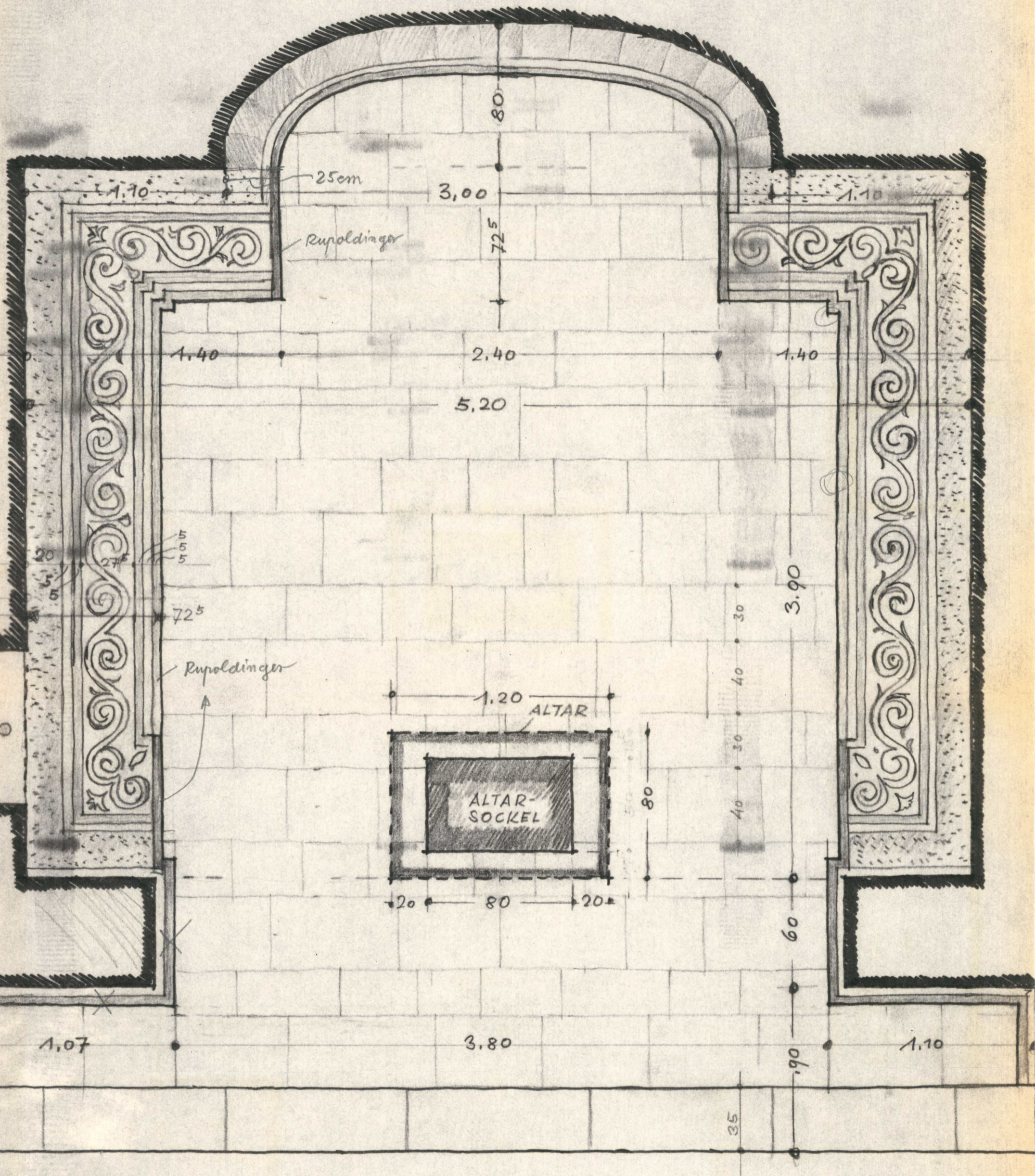


RUDOLF KAISER  
ARCHITEKT, DIPL. ING.  
Savoyenstr. 7  
8000 München 19  
Tel. (089) 171617

Arch. Planung  
Kunstabfahrt  
6.8.79

M. 1:20  
Juli 1979

München, Juli 1979  
2x



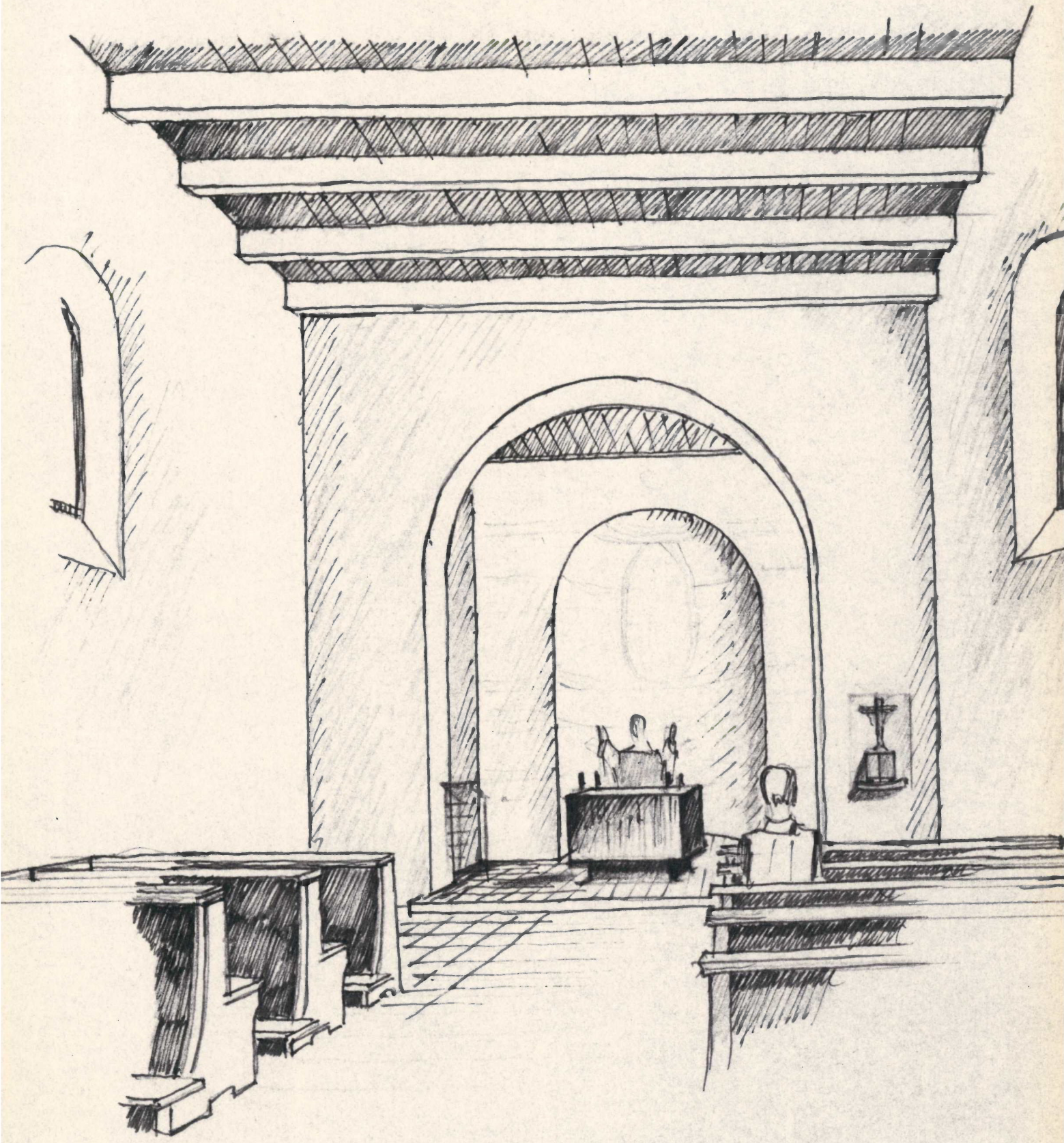
Eilialkirche in Riem  
Fußboden im Altarraum 1:20

MÜNCHEN  
5.8.79.

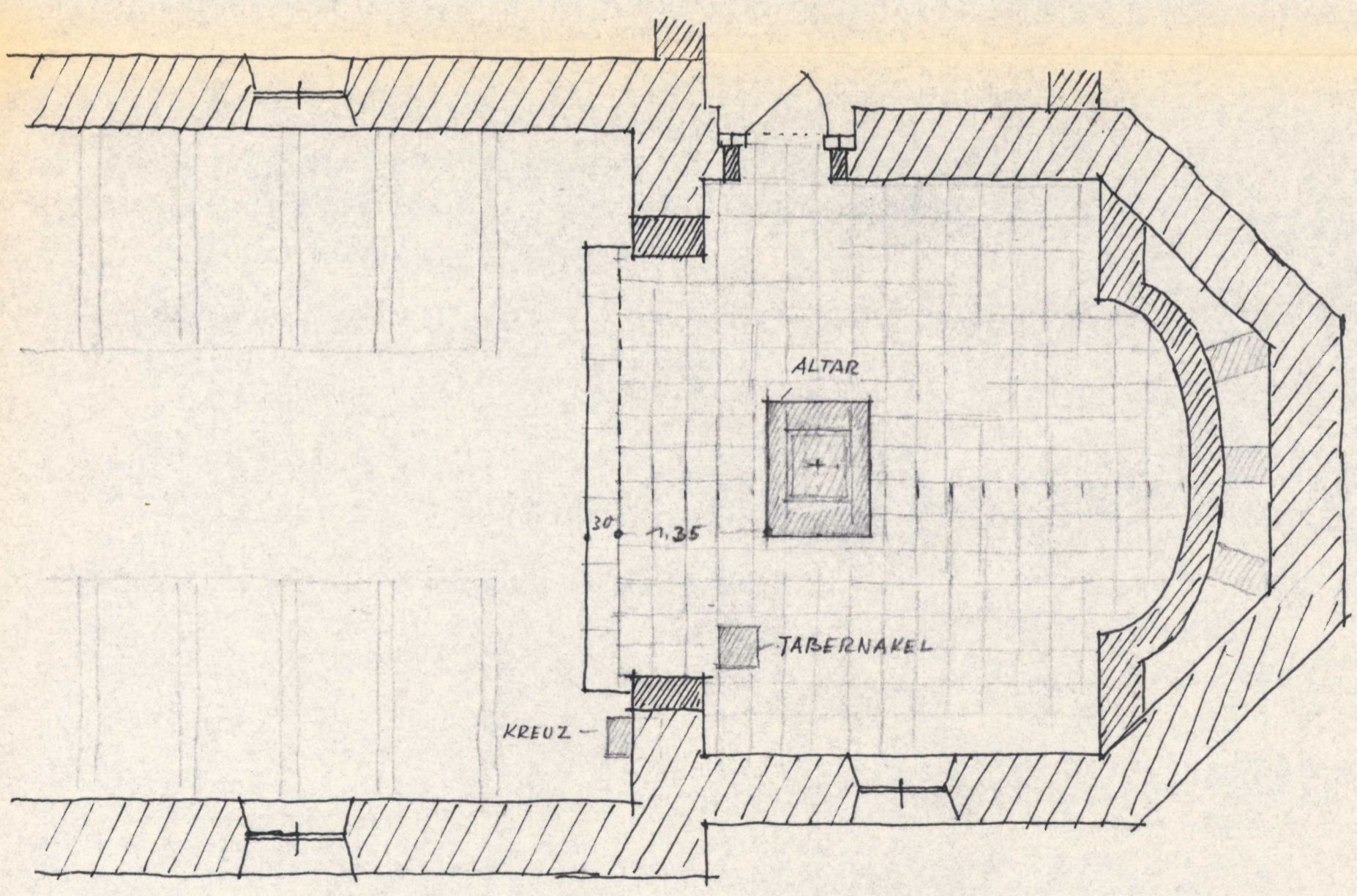
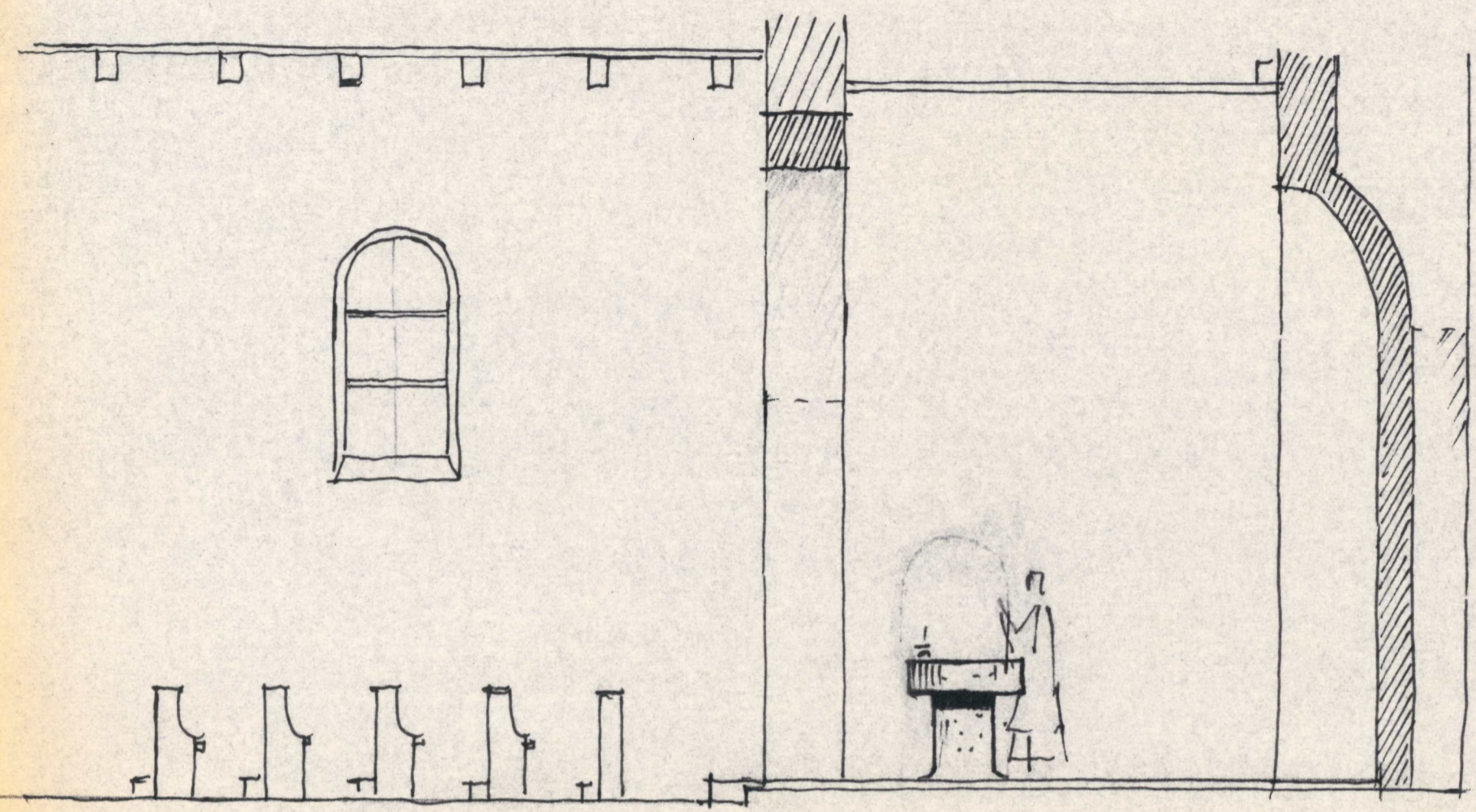
*Jamper*

N<sup>o</sup> (2) 5.8.79

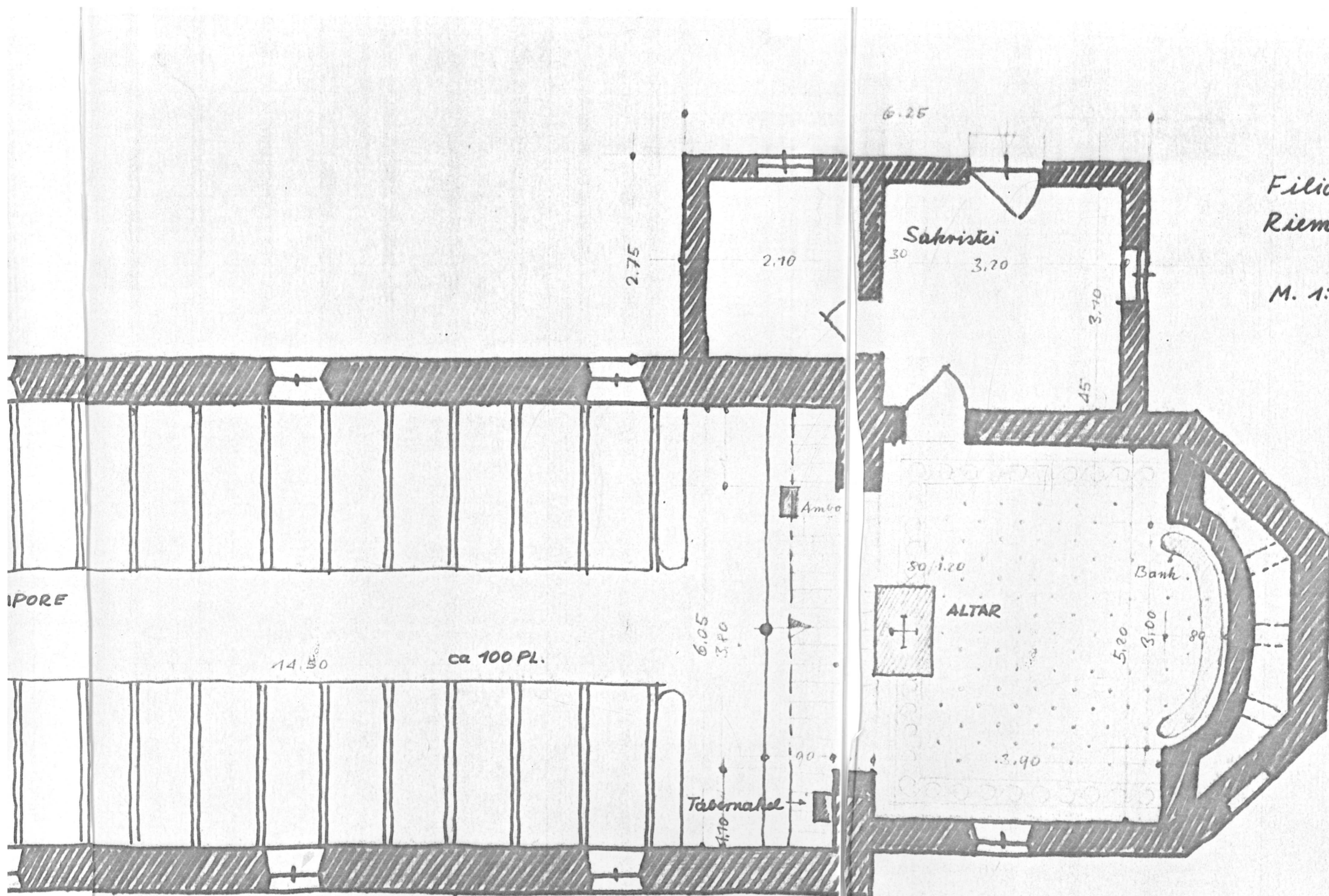
ALLE MASSE AM BAU PRÜFEN.







17/55



Filialkirche  
Riem

M. 1:50

IPORE

14.50

ca 100 Pl.

Tabernakel

Ambo

Sakristei

ALTAR

Bank

Die Ordnung befindet sich

6.11.79

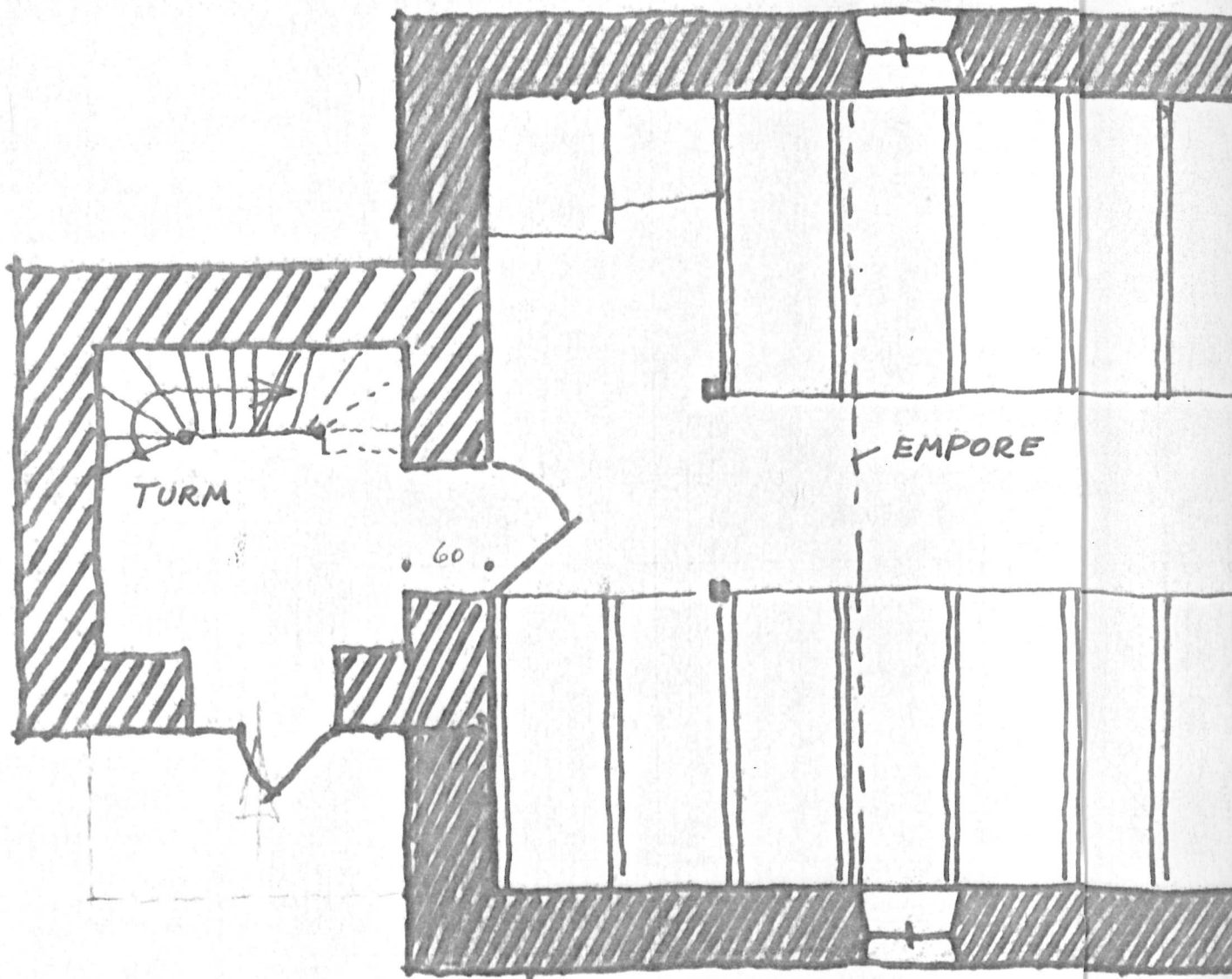
Joachim Veluyern  
Kunstreferent

München, Juli 1979

Architekt:

Tamper

3.50



TURM

60

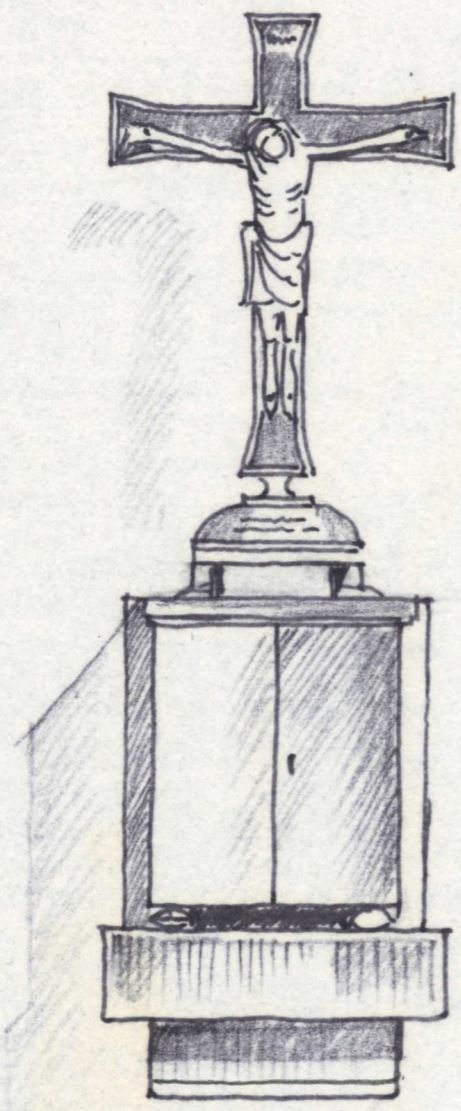
EMPORE

Steinkonsole für Tabernakel und Kreuz

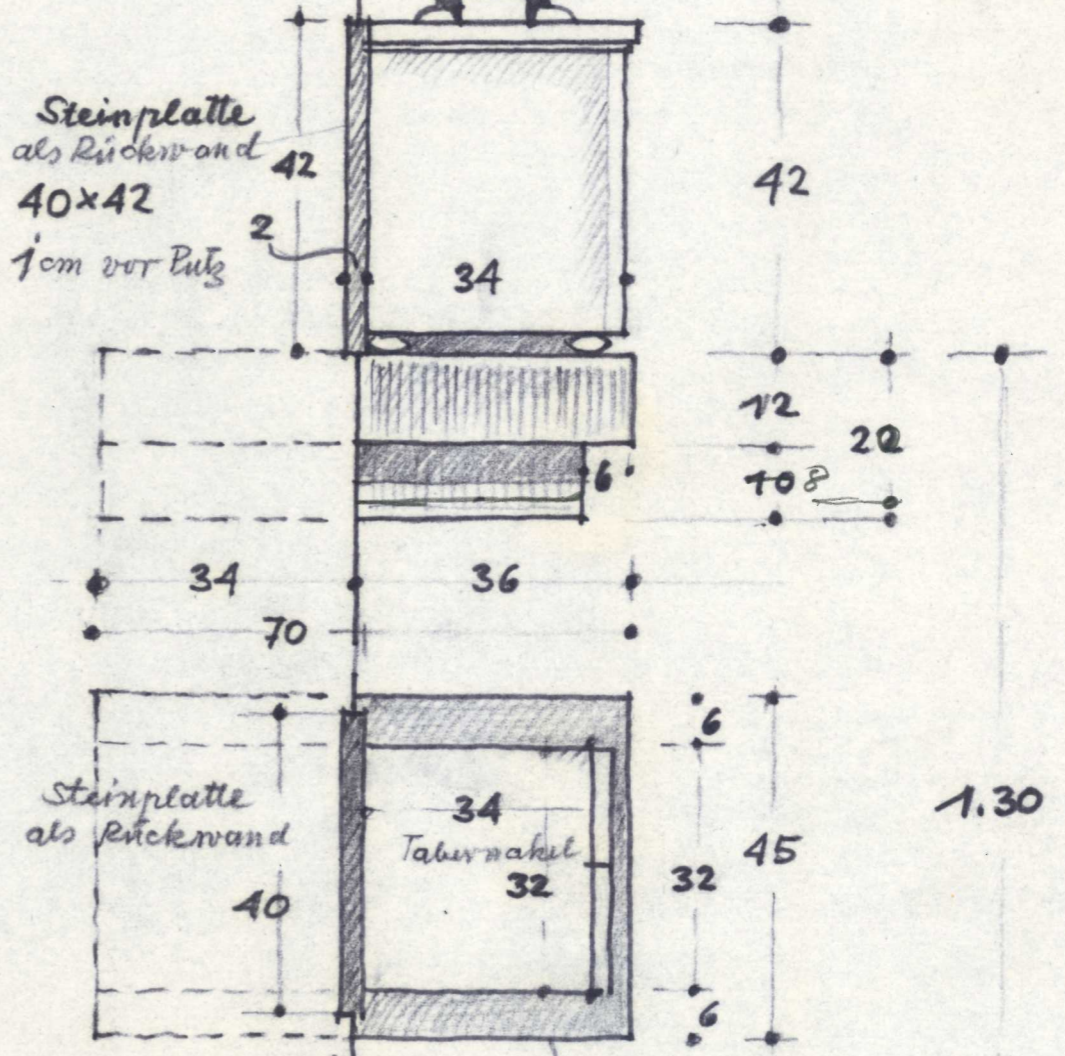
M. 1:10

Januar

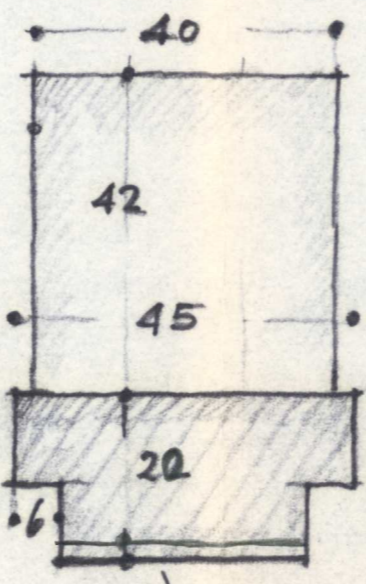
Dez. 1979



Steinplatte als Rückwand 40x42  
1cm vor Putz



40/42  
Steinplatte als Rückwand



Steinkonsole

Steinkonsole 45/70 (22cm stark)  
Rücksprung 6cm vorne + seitlich

±0,00

3x